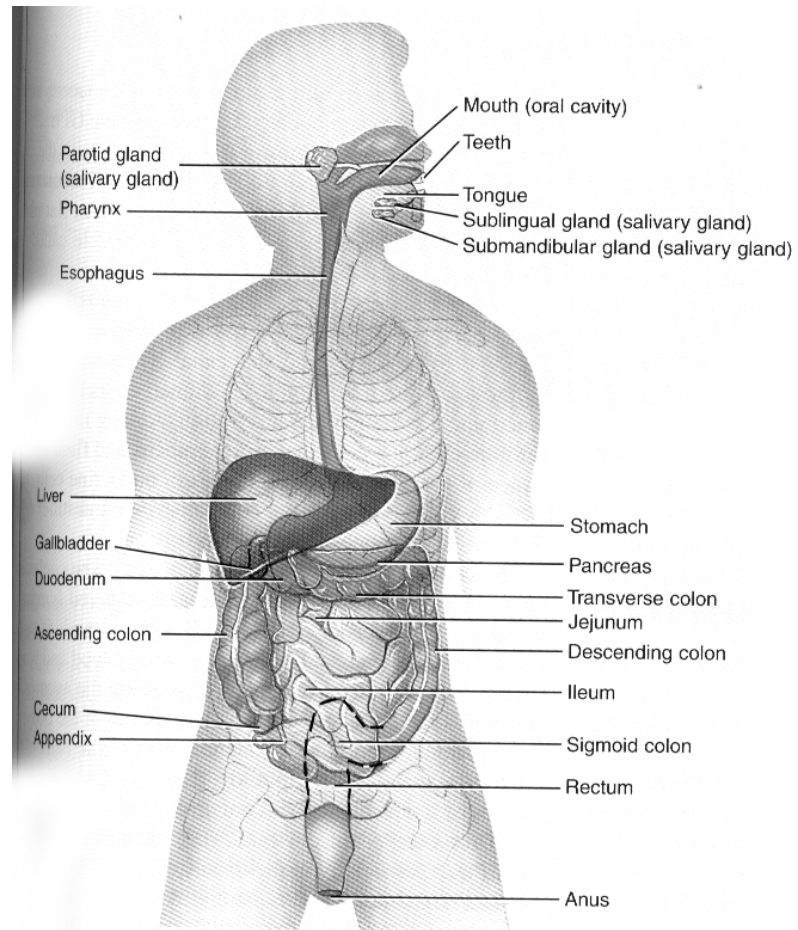


# **Gastrointestinal System**

## **-Anatomy and Physiology**

### **-Imaging Procedures:**

- Salivary gland imaging**
- Esophageal transit**
- Gastroesophageal Reflux**
- Gastric Emptying**
- Liver/Spleen Imaging**
- Hemangioma Imaging**
- Hepatobiliary Imaging**
- Gastrointestinal Bleeding Imaging**
- Meckels Diverticulum Imaging**



Right lateral view of head and neck and anterior view of chest, abdomen, and pelvis

## Digestive Processes:

- Ingestion
- Secretion
- Mixing and Propulsion
- Digestion
  - Mechanical
  - Chemical
- Absorption
- Defecation

# Salivary Gland Imaging

Indications

Procedures

Findings

# Esophageal Transit

## Indications

## Procedure

## Findings

# Gastroesophageal Reflux

Indications

Procedure

Finding

Gastric Emptying

Indications

Procedure

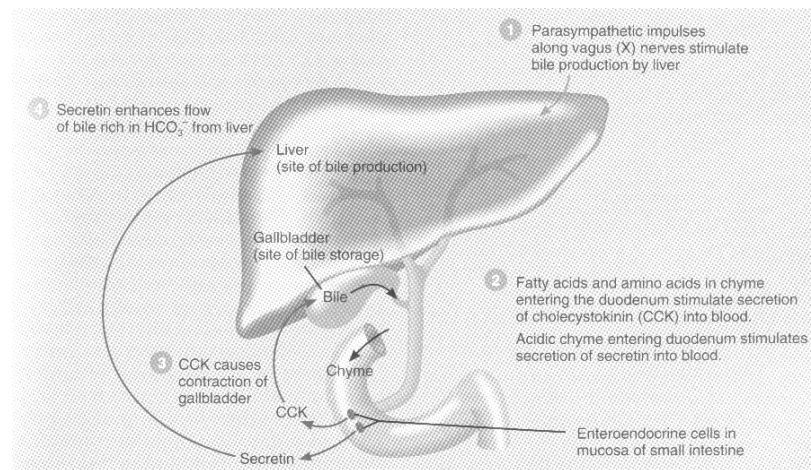
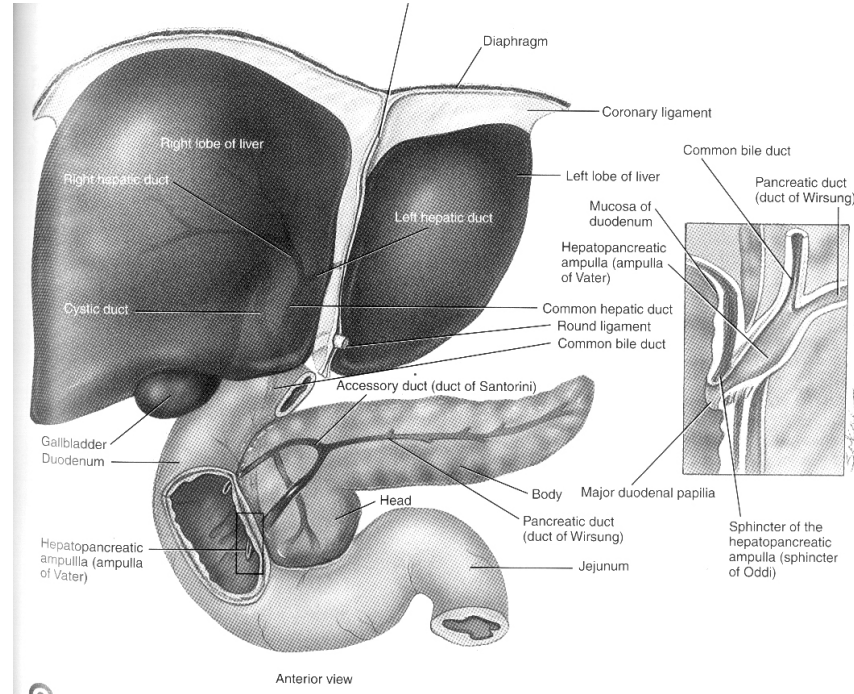
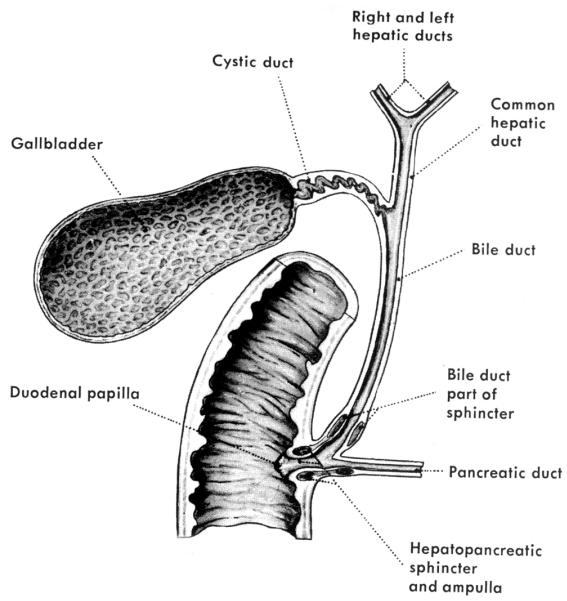
Finding

# Liver/Spleen Imaging

## Indications

## Procedure

## Findings



# Hepatobiliary Imaging (Cholescintigraphy)

Indications

Procedure

Findings

CCK

Morphine

Gastrointestinal bleeding

Prep

Procedure

Findings

Meckels Diverticulum

Prep

Procedure

Findings